

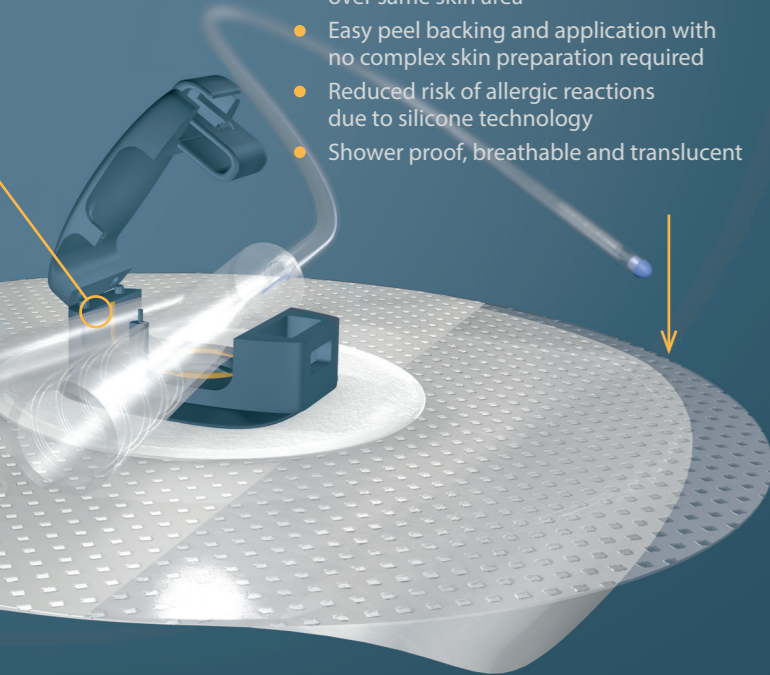
SOFT SILICONE RE-ADHESIVE GEL PAD

because '...some patients suffer from impaired skin integrity that makes stabilization more challenging'⁷

SILICONE TECHNOLOGY

Soft silicone 'tack' layer provides immediate gentle adhesion to skin.

- Ideal for atraumatic removal without use of solutions to dissolve adhesive
- No sticky residue
- Effectively conforms to all skin types through multiple points of contact
- Re-adhesive tack enables easy repositioning and close skin inspection
- Ideal for repeated application over same skin area
- Easy peel backing and application with no complex skin preparation required
- Reduced risk of allergic reactions due to silicone technology
- Shower proof, breathable and translucent



optimum medical
support™

Training and education to Optimise patient care

Visit www.optimummedicalsupport.co.uk to find out more.



REFERENCES

1. National Institute for Health and Care Excellence (2012) Guidance 139. Infection: Prevention and Control of Healthcare-associated Infections in Primary and Community Care. London: National Institute for Health and Care Excellence; Available at www.nice.org.uk
2. Bell M A (2010) Severe Indwelling Urinary Catheter-Associated Urethral Erosion in four elderly men. Ostomy and Wound Management. December 2010 pp36-39
3. Loveday HP, Wilson JA, Pratt RJ et al. (2013) Epic3: National Evidence-Based guidelines for Preventing Healthcare-Associated Infections in NHS Hospitals in England. Journal of Hospital Infection; 86S1: S1-S70
4. The European Association of Urology Nurses (2012) Evidence Based Guidelines for Best Practice in Urology Healthcare. Catheterisation, Indwelling Catheters in Adults. Urethral and Suprapubic. Netherlands: The European Association of Urology Nurses
5. Freeman C (2009) Why more attention must be given to catheter fixation. Nursing Times; 105:29
6. Billington A et al. (2008) Minimizing the complications associated with migrating catheters. British Journal of Community Nursing. 13(11) pp502-506
7. Callan L. & Parker D. et al. (2012) Wound, Ostomy and Continence Nurse Society, Clinical Practice Continence Committee. Indwelling Urinary Catheter Securement: Best Practice for Clinicians; Available at <http://www.faet.org/docs/indwellingurinarycathetersecurement.pdf>



optimummedical

Optimum Medical

First floor, Unit 5, Armley Court, Armley Road,
Leeds, LS12 2LB, United Kingdom
Tel.: +44 (0) 8456 435 479, Fax: +44 (0) 1142 383 826
www.optimummedical.co.uk

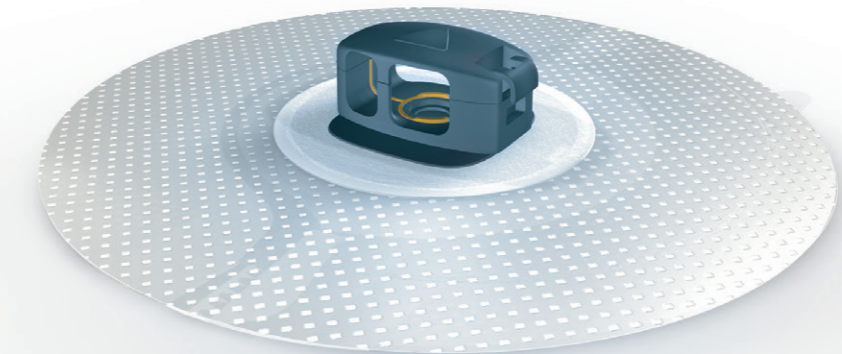


Company Registration No: 6779883 OMS-UFG-101 July 15

independence with confidence

Ugo fix™
gentle catheter clip

with **silicone technology** for
atraumatic patient experience



optimummedical®



*'Best practice suggests catheters are secured to avoid trauma'*¹
NICE Guidelines

'Proper securement is a priority'²

Secure, reliable and gentle. The **Ugo Fix Gentle** benefits from **silicone technology** to ensure minimal trauma upon removal, and no sticky residue. It provides comfortable fixation giving patients the freedom to move around freely.

The **Ugo Fix Gentle** provides effective fixation of 2 way indwelling urinary catheters at the bifurcation of the catheter. It enables fixation of urethral or suprapubic catheters which are attached to catheter valves or drainage bags.

Responding to patient need

*'Improper urinary securement is associated with urethral erosion'*²

*'It is important to secure the catheter in order to minimise patient discomfort'*³

*'Stabilising urethral catheters can reduce adverse events such as dislodgement, tissue trauma, inflammation and urinary tract infection.'*⁴

Why choose the Ugo Fix Gentle?

The Ugo Fix Gentle is compliant with Freeman's considerations when selecting a fixation device⁵

So it's:

- Purpose designed to secure the foley catheter
- Secure without causing tension of urethral tissue
- Designed to suit the patient's lifestyle
- Convenient and uncomplicated to apply

REVOLVING CLIP

*'When selecting the most appropriate catheter fixation device, consideration should be given to the need for balancing movement with effective stabilization'*⁶

Securely fixes catheter in place at bifurcation and holds away from skin to prevent trauma

Revolving clip motion allows movement in natural unison with body

Raised arrow to indicate direction of catheter insertion

Soft silicone re-adhesive gel pad

Easy open catch with positive sensory click

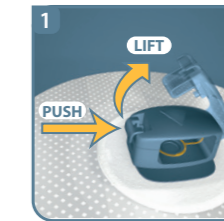
Internal silicone bonding to effectively grip the catheter

OM Code	PIP Code	NHS Code	Product Description:	Inner Pack	Outer Pack
3004	394-9054	FSS1084	Ugo Fix Gentle catheter clip	5 pcs.	100 pcs.

To make an enquiry, please call +44(0) 845 643 5479 or email ugo@optimummedical.co.uk

INSTRUCTIONS FOR USE

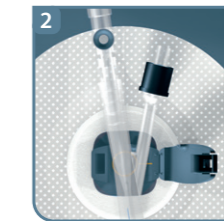
It's important that you fix your catheter into the **Ugo Fix Gentle** prior to applying the soft silicone re-adhesive gel pad to your skin.



BEFORE APPLYING TO SKIN FOR UP TO 7 DAY USE

1 OPEN CLIP

- Push and lift the catch to open the **Ugo Fix Gentle** lid
- You will sense a click



2 INSERT CATHETER

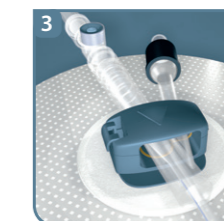
- Place the bifurcation part of the catheter into the **Ugo Fix Gentle** (it can only fit one way)

3 CLOSE LID

- Once in place, fix the **Ugo Fix Gentle** lid closed by gently pressing the lid down
- You will sense a click

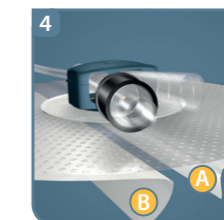
APPLICATION TO SKIN

Now the catheter is fixed into the clip, the **Ugo Fix Gentle** can be applied to the skin. Ensure the skin is clean and dry before application.



4

- Remove backing (A) and apply to skin in desired position
- Remove backing (B) and smooth in place
- Ensure the arrow on top of the clip is pointing towards the bladder and the catheter is not pulling when you stand up or move around (we recommend an allowance of 2 to 4 cm slack to enable natural movement of the catheter)
- When required, you can reposition the soft silicone re-adhesive gel pad by gently removing and reapplying as necessary



Please note: The **Ugo Fix Gentle** is designed to fix and support the catheter. If the catheter is attached to a urine drainage bag it is advisable to use additional support for the weight of the urine bag.



WARNING: KEEP OUT OF REACH OF CHILDREN